

Map to Becoming Certified



An Empower Community Care Organization

START



1. Select Group Leaders



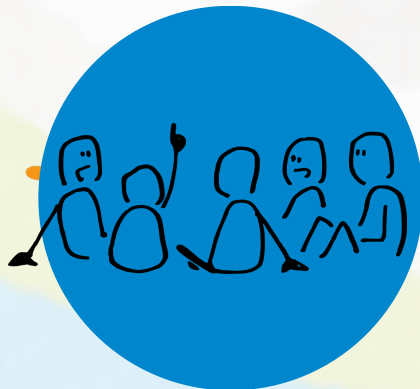
2. Acquire IY Group Leader Materials



3. Prepare for Training using Leader's Manual & Video Vignettes (with co-facilitator recommended)



4. Attend an IY training



8. Implement 2nd Group Cycle.
Continue to participate in consultation with video reviews



7. Schedule Consultation and receive video reviews (4 or more calls throughout)



6. Implement 1st Group Cycle



5. Start prep for groups



9. Submit Application paperwork to IY headquarters for review



10. Application is reviewed. Congratulations on becoming a certified group leader!

Continue delivering groups, consultation, supporting new group leaders by delivering groups with them, and consider becoming a peer coach